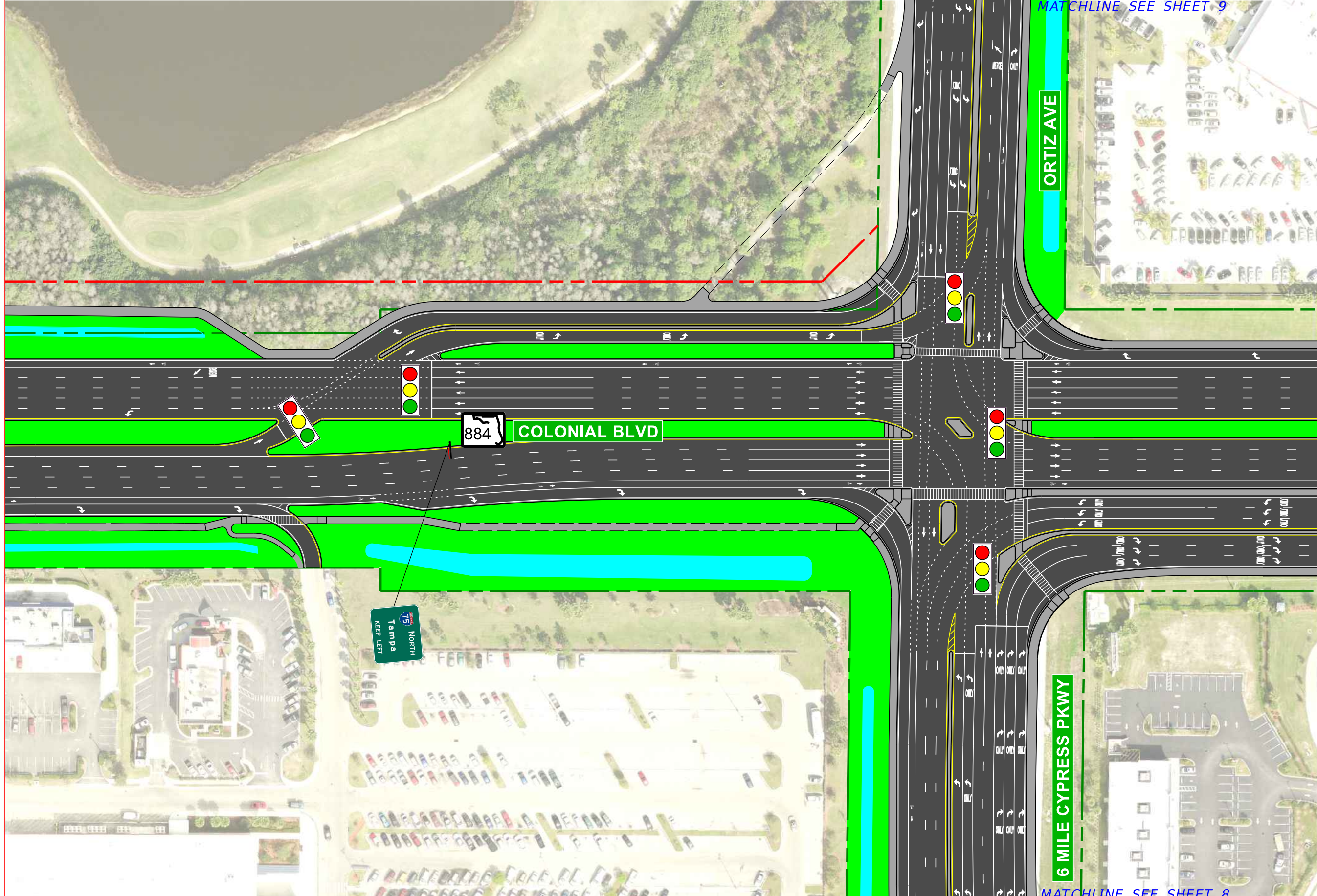


<b>LEGEND</b>	EXISTING ROW	PROPOSED BARRIER WALL	 DATE OF AERIAL: 2011	<b>AMERICAN CONSULTING ENGINEERS OF FLORIDA, LLC</b> 2818 Cypress Ridge Blvd, Suite 200 Wesley Chapel, Florida 33544 Phone: (813) 435-2600 Fax: (813) 435-2601 Certificate of Authorization No. 9302 Ryan R. Forrestel, P.E. No. 38912	<b>Interchange Modification Report          I-75 and SR 884 (Colonial Blvd.)          DDI Alternative 4 Improved with CFI-SS          Master Signing Plans</b> FPID No.: 413065-1-52-01	SHEET NO.
	EXISTING LA ROW	PROPOSED ROADWAY				SIDEWALK/TRAIL

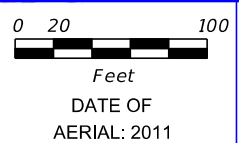
MATCHLINE SEE SHEET 9



MATCHLINE SEE SHEET 8

**LEGEND**

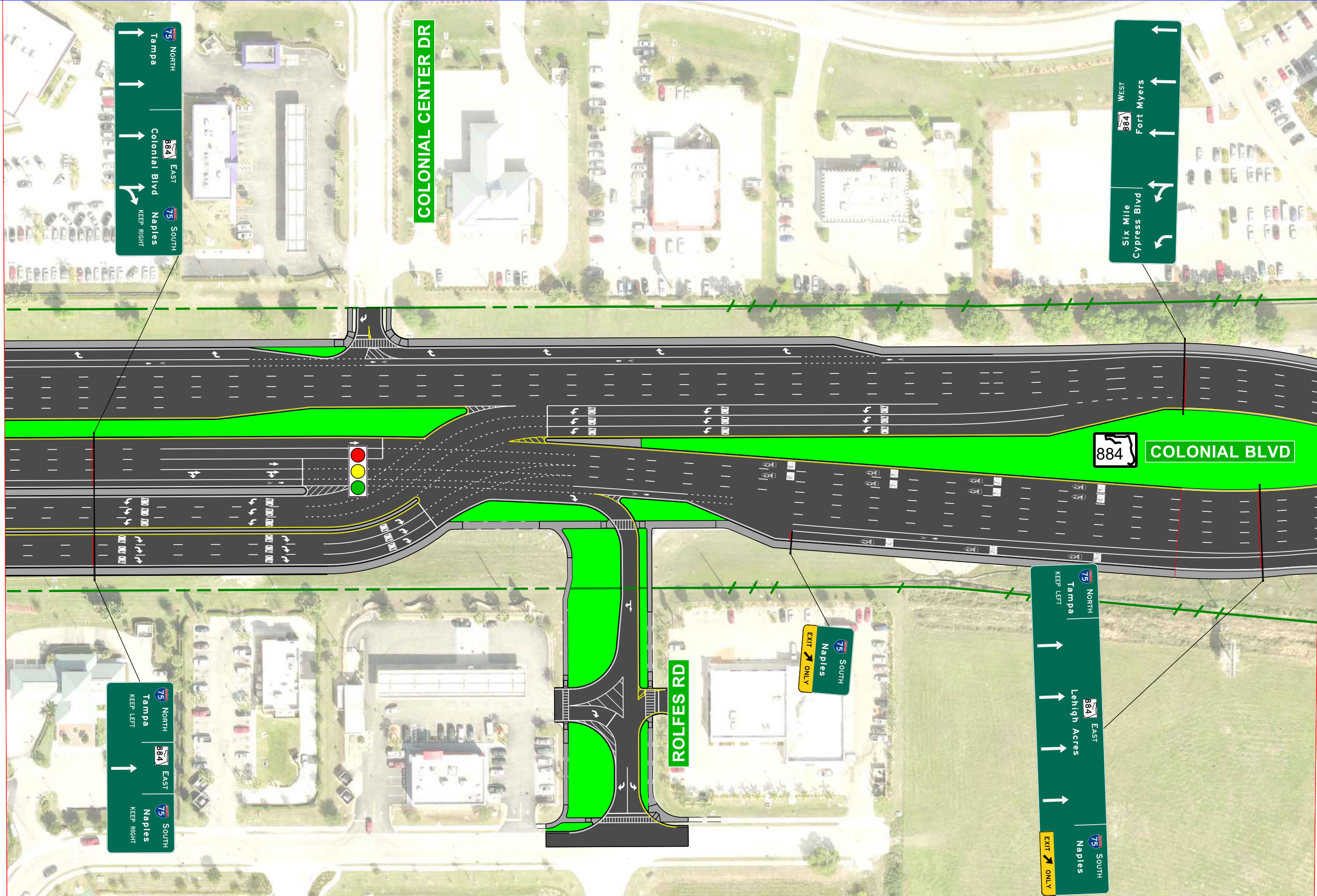
- EXISTING ROW
- /- EXISTING LA ROW
- PROPOSED ROW
- PROPOSED BARRIER WALL
- PROPOSED ROADWAY
- SIDEWALK/TRAIL



**AMERICAN CONSULTING ENGINEERS OF FLORIDA, LLC**  
 2818 Cypress Ridge Blvd, Suite 200  
 Wesley Chapel, Florida 33544  
 Phone: (813) 435-2600 Fax: (813) 435-2601  
 Certificate of Authorization No. 9302  
 Ryan R. Forrestel, P.E. No. 38912

**Interchange Modification Report**  
**I-75 and SR 884 (Colonial Blvd.)**  
**DDI Alternative 4 Improved with CFI-SS**  
**Master Signing Plans**  
 FPID No.: 413065-1-52-01

SHEET NO.  
2



COLONIAL CENTER DR

884 COLONIAL BLVD

ROLFE RD

75 NORTH  
Tampa  
884 EAST  
Colonial Blvd  
75 SOUTH  
Naples  
KEEP RIGHT

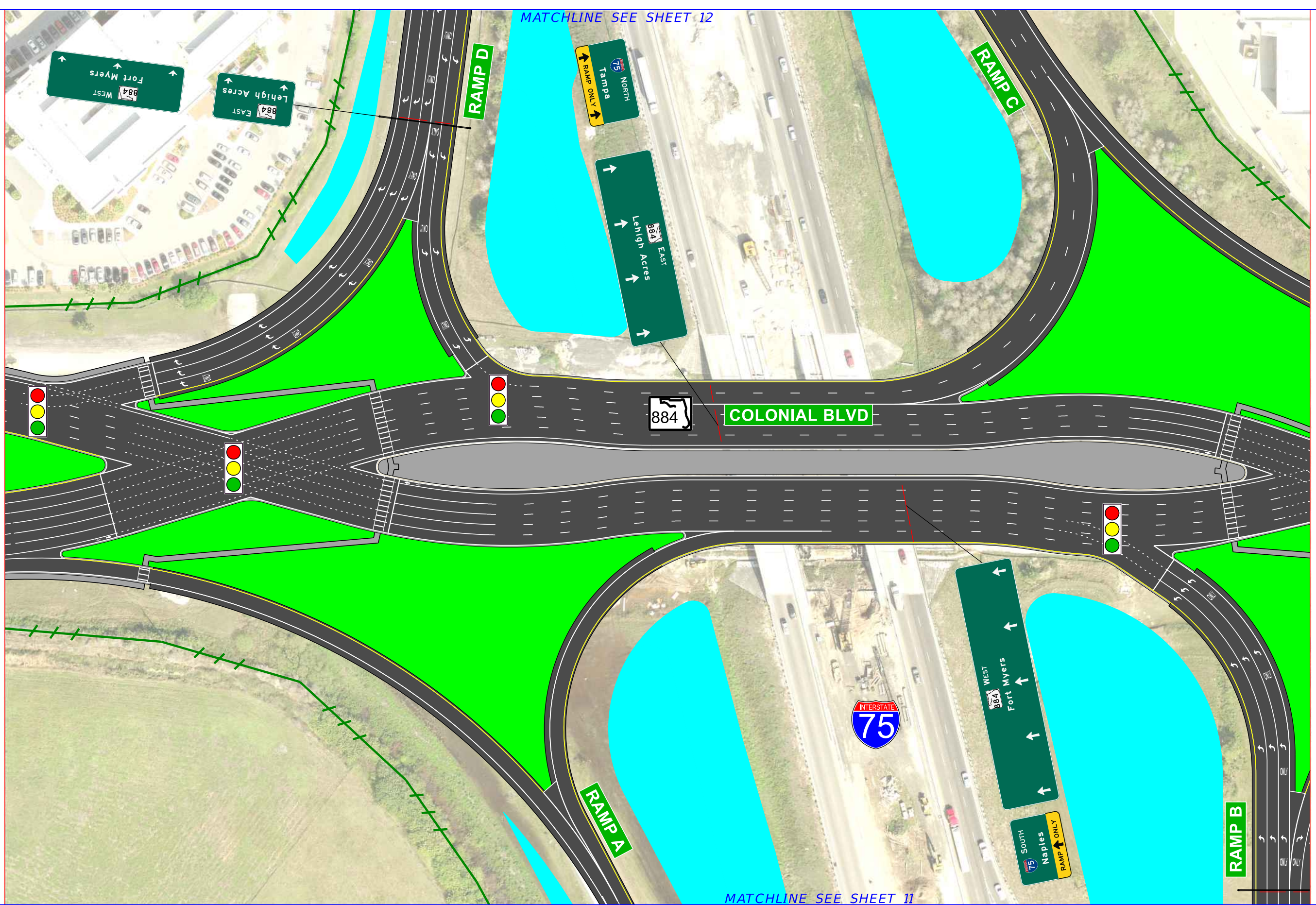
884 WEST  
Fort Myers  
Six Mile Cypress Blvd

75 NORTH  
Tampa  
KEEP LEFT  
884 EAST  
Lehigh Acres  
75 SOUTH  
Naples  
KEEP RIGHT

75 NORTH  
Tampa  
KEEP LEFT  
884 EAST  
Lehigh Acres  
75 SOUTH  
Naples  
EXIT ONLY

75 SOUTH  
Naples  
EXIT ONLY

<b>LEGEND</b>	EXISTING ROW	PROPOSED BARRIER WALL	 DATE OF AERIAL: 2011	<b>AMERICAN CONSULTING ENGINEERS OF FLORIDA, LLC</b> 2818 Cypress Ridge Blvd, Suite 200 Wesley Chapel, Florida 33544 Phone: (813) 435-2600 Fax: (813) 435-2601 Certificate of Authorization No. 9302 Ryan R. Forrestel, P.E. No. 38912	<b>Interchange Modification Report          I-75 and SR 884 (Colonial Blvd.)          DDI Alternative 4 Improved with CFI-SS          Master Signing Plans</b> FPID No.: 413065-1-52-01	SHEET NO.
	EXISTING LA ROW	PROPOSED ROADWAY				SIDEWALK/TRAIL



**LEGEND**

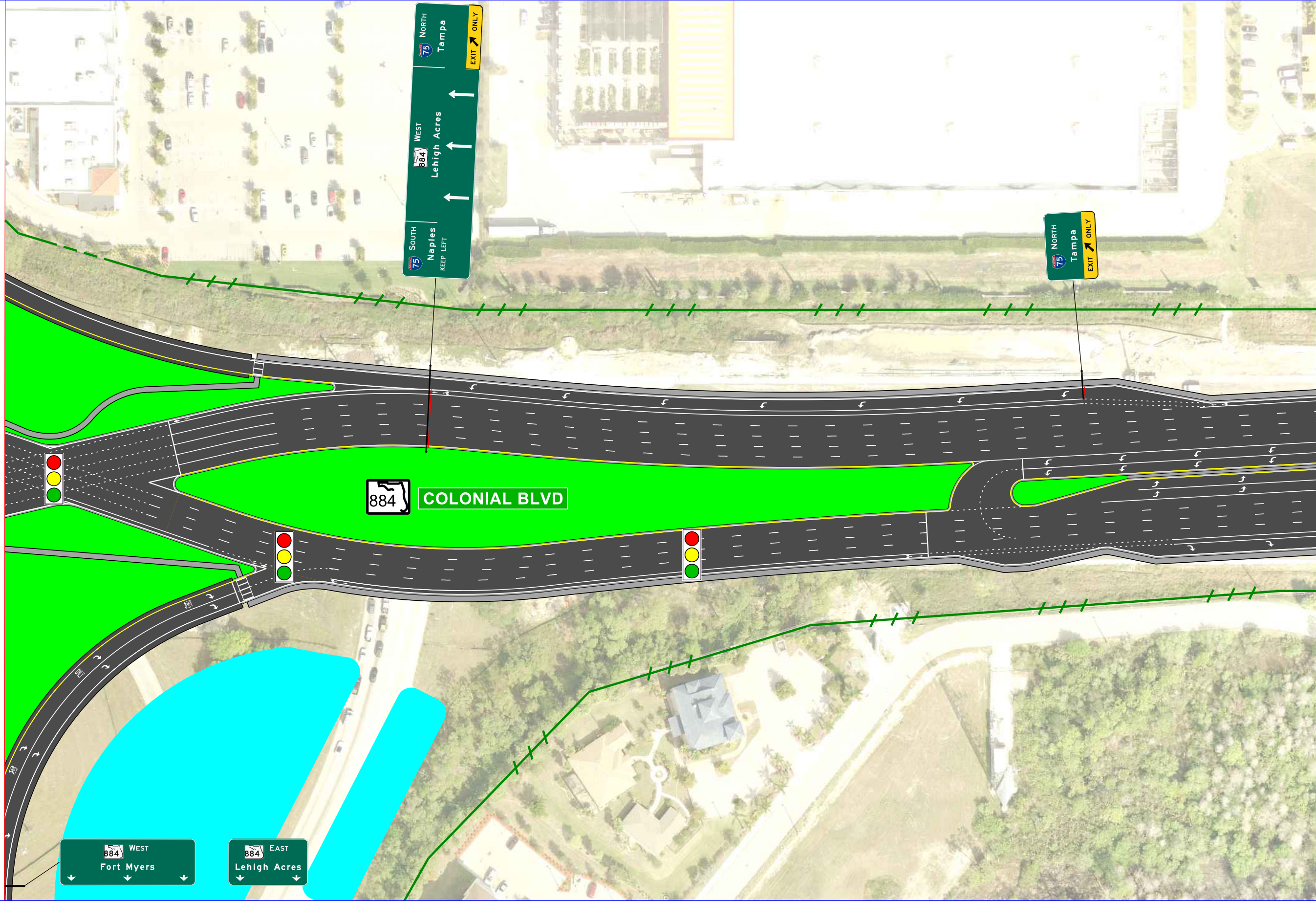
	EXISTING ROW		PROPOSED BARRIER WALL
	EXISTING LA ROW		PROPOSED ROADWAY
	PROPOSED ROW		SIDEWALK/TRAIL

0 20 100  
Feet  
DATE OF AERIAL: 2011

AMERICAN CONSULTING ENGINEERS OF FLORIDA, LLC  
2818 Cypress Ridge Blvd, Suite 200  
Wesley Chapel, Florida 33544  
Phone: (813) 435-2600 Fax: (813) 435-2601  
Certificate of Authorization No. 9302  
Ryan R. Forrestel, P.E. No. 38912

**Interchange Modification Report  
I-75 and SR 884 (Colonial Blvd.)  
DDI Alternative 4 Improved with CFI-SS  
Master Signing Plans**  
FPID No.: 413065-1-52-01

SHEET NO.  
4



SOUTH 75 Naples KEEP LEFT  
 WEST 884 Lehigh Acres  
 NORTH 75 Tampa EXIT ONLY

NORTH 75 Tampa EXIT ONLY

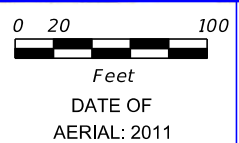
884 COLONIAL BLVD

884 WEST Fort Myers

884 EAST Lehigh Acres

**LEGEND**

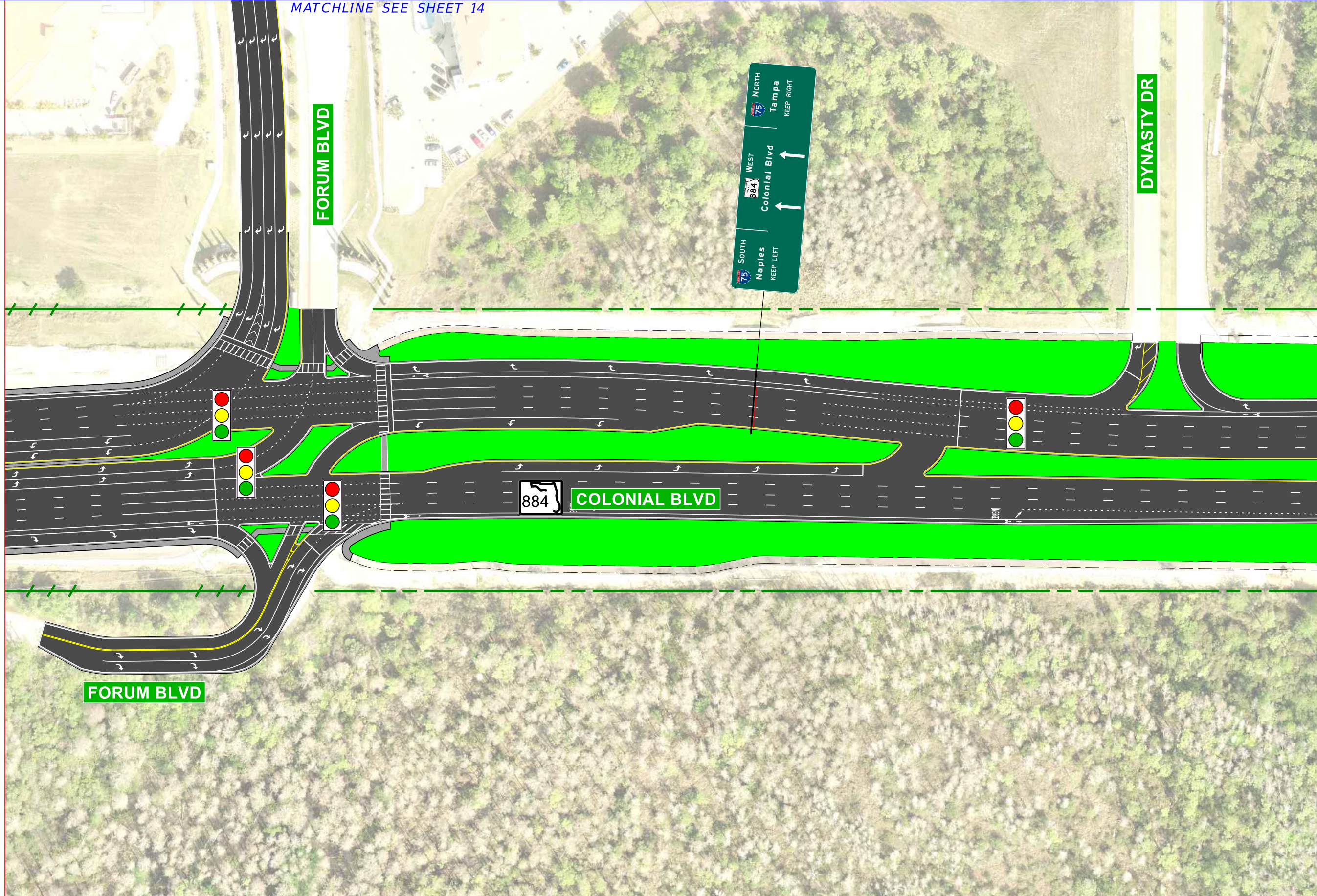
- EXISTING ROW
- /-/- EXISTING LA ROW
- PROPOSED ROW
- PROPOSED BARRIER WALL
- PROPOSED ROADWAY
- SIDEWALK/TRAIL



AMERICAN CONSULTING ENGINEERS OF FLORIDA, LLC  
 2818 Cypress Ridge Blvd, Suite 200  
 Wesley Chapel, Florida 33544  
 Phone: (813) 435-2600 Fax: (813) 435-2601  
 Certificate of Authorization No. 9302  
 Ryan R. Forrestel, P.E. No. 38912

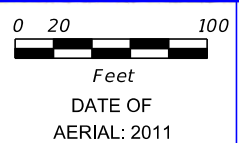
**Interchange Modification Report**  
**I-75 and SR 884 (Colonial Blvd.)**  
**DDI Alternative 4 Improved with CFI-SS**  
**Master Signing Plans**  
 FPID No.: 413065-1-52-01

SHEET NO.  
 5



**LEGEND**

- EXISTING ROW
- - - EXISTING LA ROW
- PROPOSED ROW
- PROPOSED BARRIER WALL
- PROPOSED ROADWAY
- SIDEWALK/TRAIL



AMERICAN CONSULTING ENGINEERS OF FLORIDA, LLC  
 2818 Cypress Ridge Blvd, Suite 200  
 Wesley Chapel, Florida 33544  
 Phone: (813) 435-2600 Fax: (813) 435-2601  
 Certificate of Authorization No. 9302  
 Ryan R. Forrestel, P.E. No. 38912

**Interchange Modification Report  
 I-75 and SR 84 (Colonial Blvd.)  
 DDI Alternative 4 Improved with CFI-SS  
 Master Signing Plans**  
 FPID No.: 413065-1-52-01

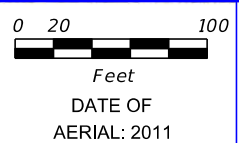
SHEET NO.  
 6



884 COLONIAL BLVD

**LEGEND**

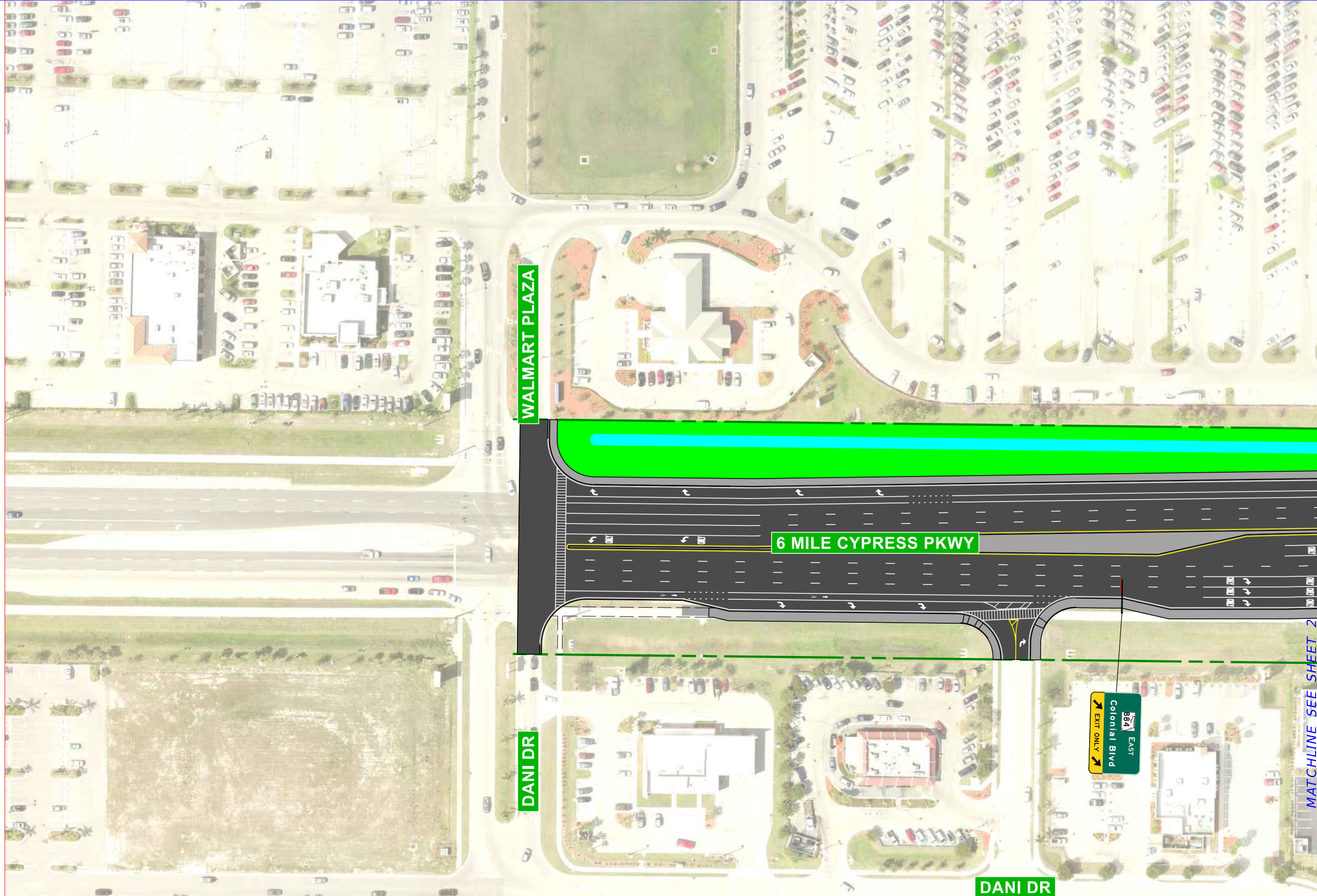
- EXISTING ROW
- /-/- EXISTING LA ROW
- PROPOSED ROW
- PROPOSED BARRIER WALL
- PROPOSED ROADWAY
- SIDEWALK/TRAIL



AMERICAN CONSULTING ENGINEERS OF FLORIDA, LLC  
 2818 Cypress Ridge Blvd, Suite 200  
 Wesley Chapel, Florida 33544  
 Phone: (813) 435-2600 Fax: (813) 435-2601  
 Certificate of Authorization No. 9302  
 Ryan R. Forrestel, P.E. No. 38912

**Interchange Modification Report  
 I-75 and SR 884 (Colonial Blvd.)  
 DDI Alternative 4 Improved with CFI-SS  
 Master Signing Plans**  
 FPID No.: 413065-1-52-01

SHEET NO.  
7



WALMART PLAZA

6 MILE CYPRESS PKWY

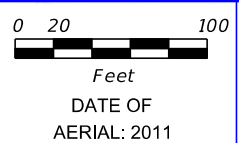
DANI DR

DANI DR



MATCHLINE SEE SHEET 2

<b>LEGEND</b>		EXISTING ROW		PROPOSED BARRIER WALL
		EXISTING LA ROW		PROPOSED ROADWAY
		PROPOSED ROW		SIDEWALK/TRAIL



AMERICAN CONSULTING ENGINEERS OF FLORIDA, LLC  
 2818 Cypress Ridge Blvd, Suite 200  
 Wesley Chapel, Florida 33544  
 Phone: (813) 435-2600 Fax: (813) 435-2601  
 Certificate of Authorization No. 9302  
 Ryan R. Forrestel, P.E. No. 38912

**Interchange Modification Report  
 I-75 and SR 884 (Colonial Blvd.)  
 DDI Alternative 4 Improved with CFI-SS  
 Master Signing Plans**  
 FPID No.: 413065-1-52-01

SHEET NO.  
8





**LEGEND**

- EXISTING ROW
- EXISTING LA ROW
- PROPOSED ROW
- PROPOSED BARRIER WALL
- PROPOSED ROADWAY
- SIDEWALK/TRAIL



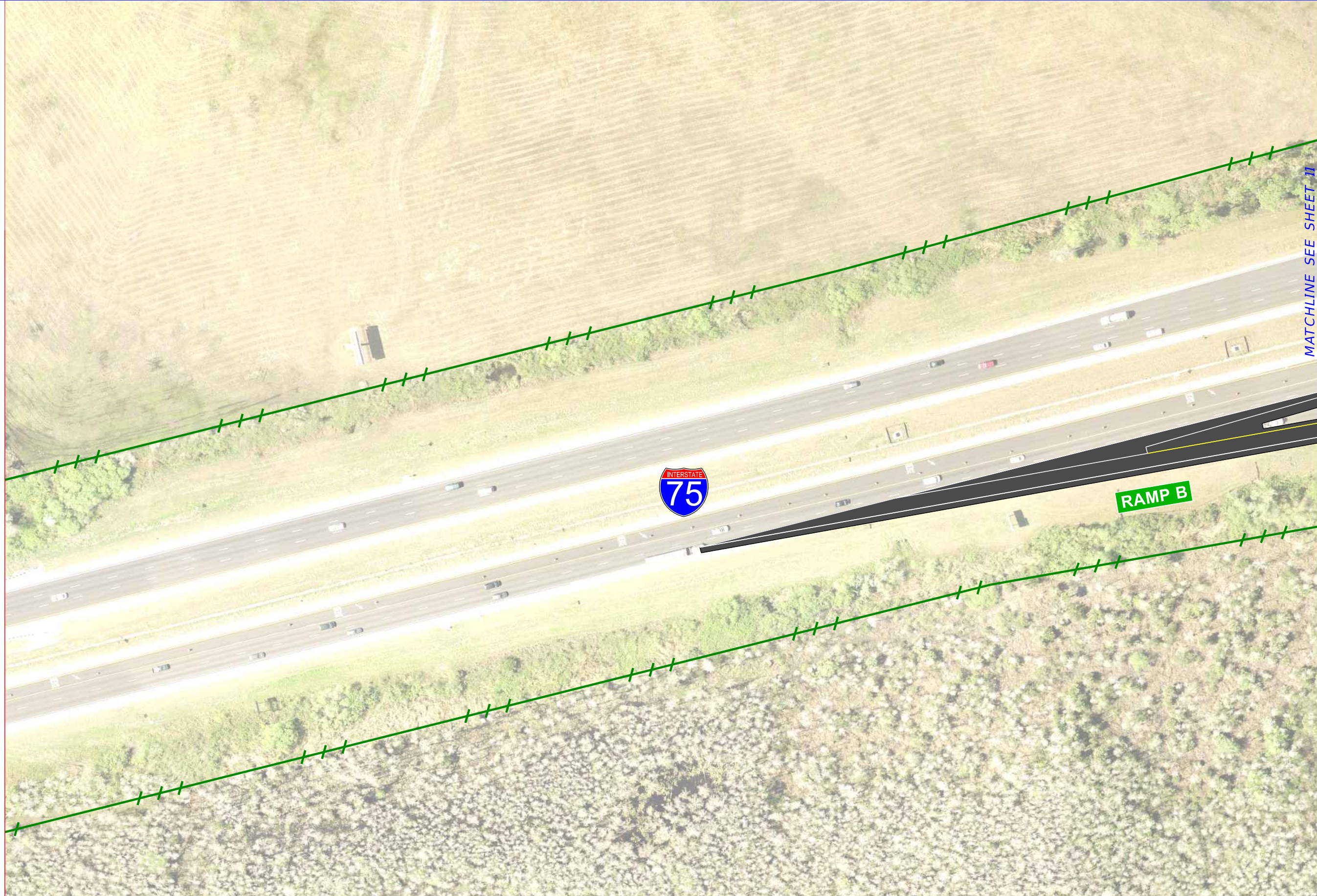
DATE OF AERIAL: 2011

AMERICAN CONSULTING ENGINEERS OF FLORIDA, LLC  
 2818 Cypress Ridge Blvd, Suite 200  
 Wesley Chapel, Florida 33544  
 Phone: (813) 435-2600 Fax: (813) 435-2601  
 Certificate of Authorization No. 9302  
 Ryan R. Forrestel, P.E. No. 38912

**Interchange Modification Report  
 I-75 and SR 884 (Colonial Blvd.)  
 DDI Alternative 4 Improved with CFI-SS  
 Master Signing Plans**  
 FPID No.: 413065-1-52-01

SHEET NO.

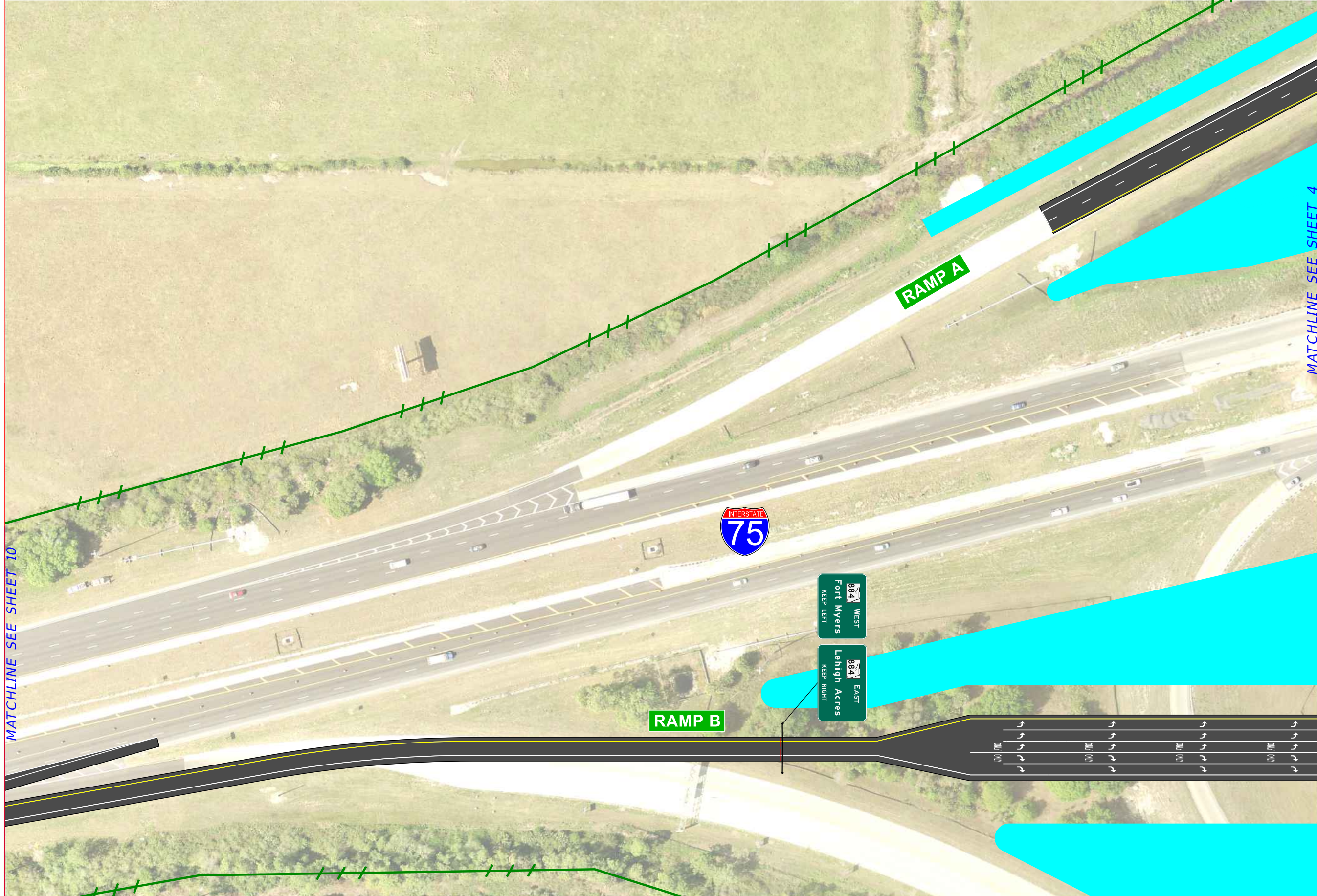
9



**RAMP B**

MATCHLINE SEE SHEET 11

<b>LEGEND</b>	EXISTING ROW	PROPOSED BARRIER WALL	 DATE OF AERIAL: 2011	<b>AMERICAN CONSULTING ENGINEERS OF FLORIDA, LLC</b> 2818 Cypress Ridge Blvd, Suite 200 Wesley Chapel, Florida 33544 Phone: (813) 435-2600 Fax: (813) 435-2601 Certificate of Authorization No. 9302 Ryan R. Forrestel, P.E. No. 38912	<b>Interchange Modification Report          I-75 and SR 884 (Colonial Blvd.)          DDI Alternative 4 Improved with CFI-SS          Master Signing Plans</b> FPID No.: 413065-1-52-01	SHEET NO.
	EXISTING LA ROW	PROPOSED ROADWAY				SIDEWALK/TRAIL

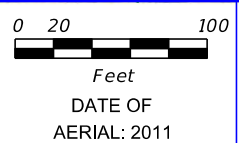


MATCHLINE SEE SHEET 10

MATCHLINE SEE SHEET 4

**LEGEND**

- |  |                 |  |                       |
|--|-----------------|--|-----------------------|
|  | EXISTING ROW    |  | PROPOSED BARRIER WALL |
|  | EXISTING LA ROW |  | PROPOSED ROADWAY      |
|  | PROPOSED ROW    |  | SIDEWALK/TRAIL        |



AMERICAN CONSULTING ENGINEERS OF FLORIDA, LLC  
 2818 Cypress Ridge Blvd, Suite 200  
 Wesley Chapel, Florida 33544  
 Phone: (813) 435-2600 Fax: (813) 435-2601  
 Certificate of Authorization No. 9302  
 Ryan R. Forrestel, P.E. No. 38912

**Interchange Modification Report  
 I-75 and SR 884 (Colonial Blvd.)  
 DDI Alternative 4 Improved with CFI-SS  
 Master Signing Plans**  
 FPID No.: 413065-1-52-01

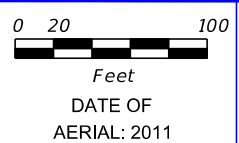
SHEET NO.  
 11



MATCHLINE SEE SHEET 4

MATCHLINE SEE SHEET 13

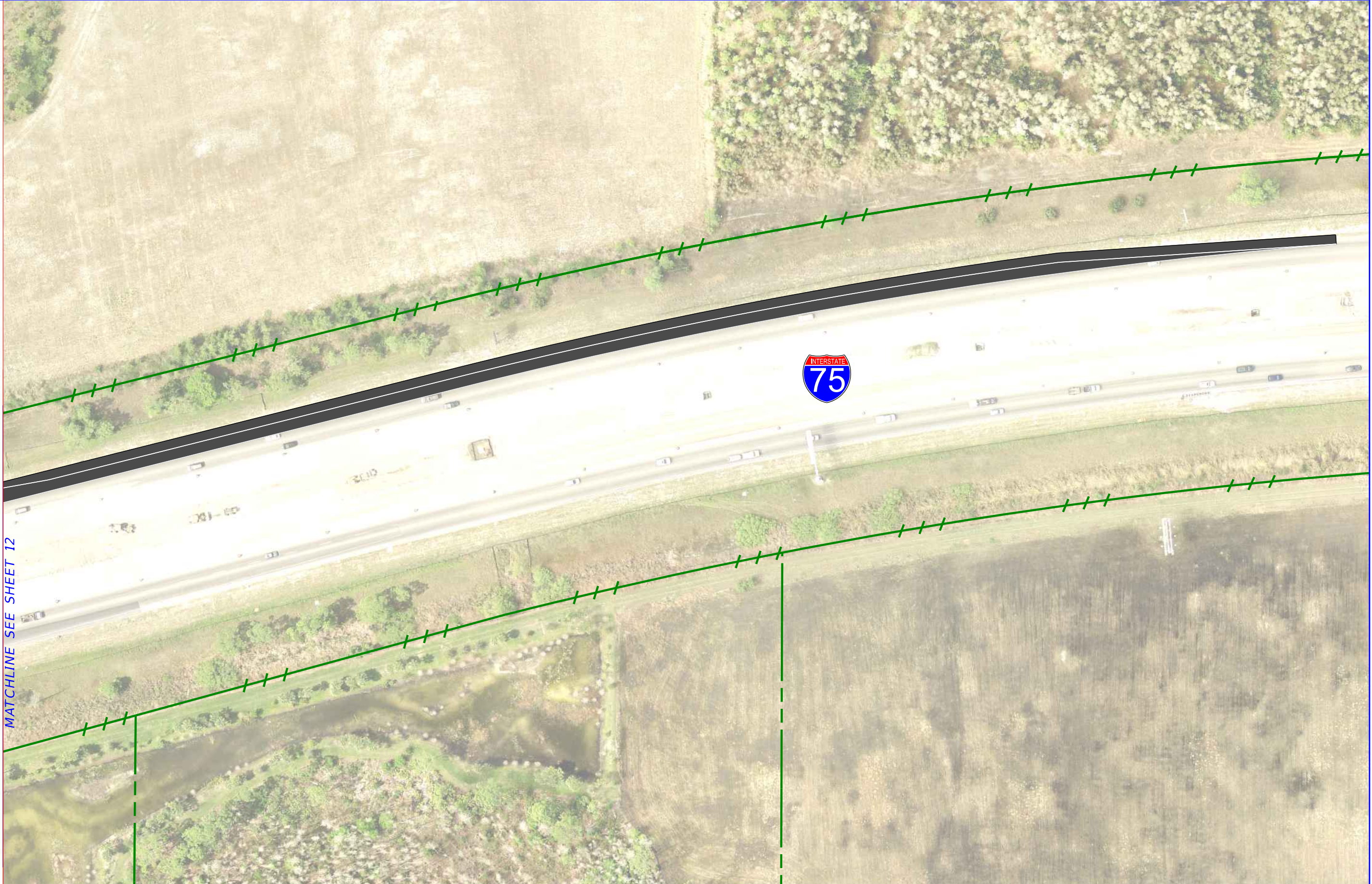
LEGEND	
	EXISTING ROW
	EXISTING LA ROW
	PROPOSED ROW
	PROPOSED BARRIER WALL
	PROPOSED ROADWAY
	SIDEWALK/TRAIL



AMERICAN CONSULTING ENGINEERS OF FLORIDA, LLC  
 2818 Cypress Ridge Blvd, Suite 200  
 Wesley Chapel, Florida 33544  
 Phone: (813) 435-2600 Fax: (813) 435-2601  
 Certificate of Authorization No. 9302  
 Ryan R. Forrestel, P.E. No. 38912

**Interchange Modification Report  
 I-75 and SR 884 (Colonial Blvd.)  
 DDI Alternative 4 Improved with CFI-SS  
 Master Signing Plans**  
 FPID No.: 413065-1-52-01

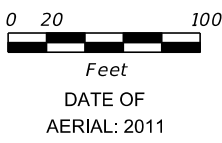
SHEET NO.  
 12



MATCHLINE SEE SHEET 12

**LEGEND**

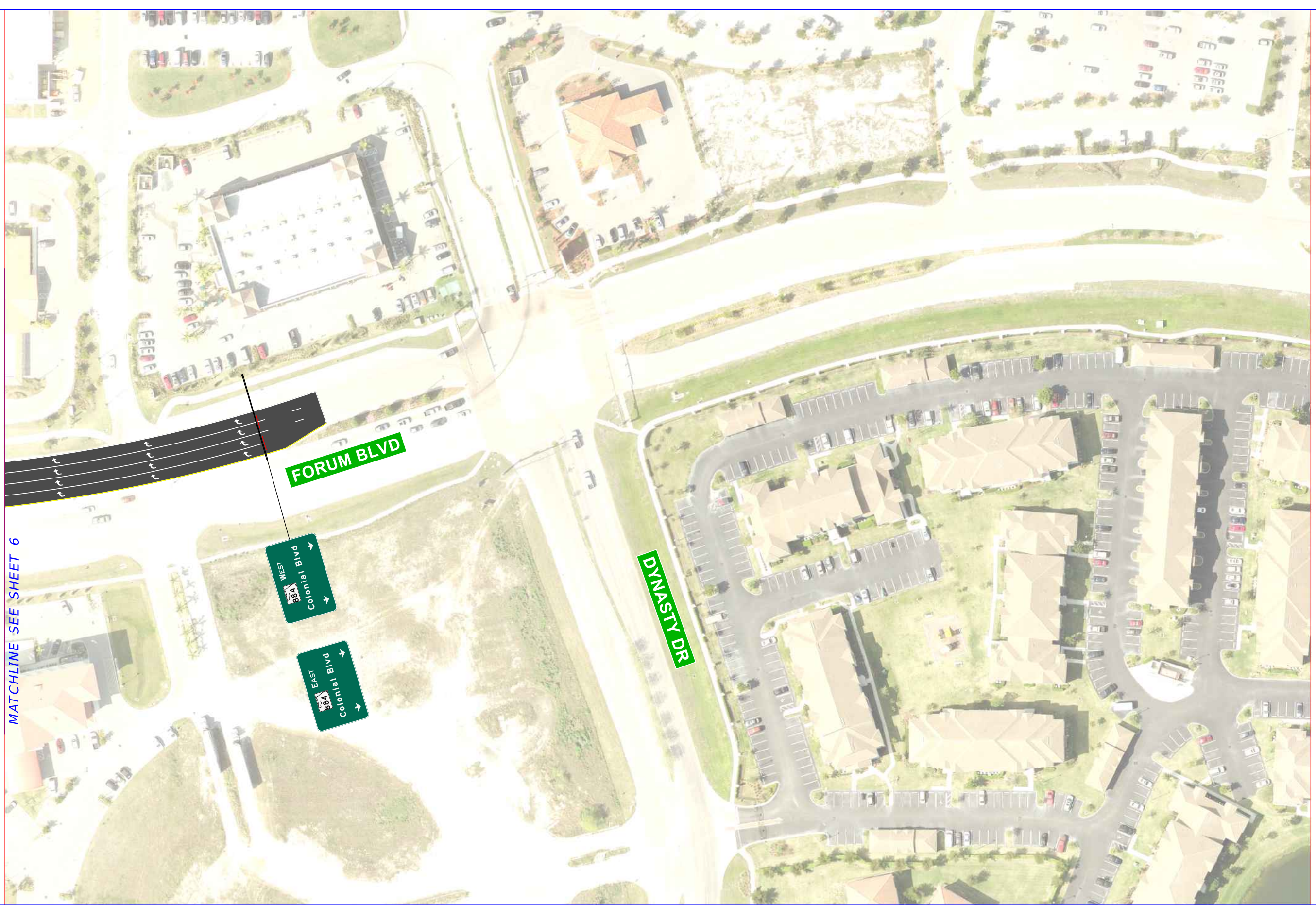
- |  |                 |  |                       |
|--|-----------------|--|-----------------------|
|  | EXISTING ROW    |  | PROPOSED BARRIER WALL |
|  | EXISTING LA ROW |  | PROPOSED ROADWAY      |
|  | PROPOSED ROW    |  | SIDEWALK/TRAIL        |



AMERICAN CONSULTING ENGINEERS OF FLORIDA, LLC  
 2818 Cypress Ridge Blvd, Suite 200  
 Wesley Chapel, Florida 33544  
 Phone: (813) 435-2600 Fax: (813) 435-2601  
 Certificate of Authorization No. 9302  
 Ryan R. Forrestel, P.E. No. 38912

**Interchange Modification Report  
 I-75 and SR 884 (Colonial Blvd.)  
 DDI Alternative 4 Improved with CFI-SS  
 Master Signing Plans**  
 FPID No.: 413065-1-52-01

SHEET NO.  
 13



MATCHLINE SEE SHEET 6

<b>LEGEND</b>		EXISTING ROW		PROPOSED BARRIER WALL	<p>0 20 100</p> <p>Feet</p> <p>DATE OF AERIAL: 2011</p>	<p style="text-align: center;"><i>AMERICAN CONSULTING ENGINEERS OF FLORIDA, LLC</i></p> <p style="text-align: center;">2818 Cypress Ridge Blvd, Suite 200 Wesley Chapel, Florida 33544 Phone: (813) 435-2600 Fax: (813) 435-2601 Certificate of Authorization No. 9302 Ryan R. Forrestel, P.E. No. 38912</p> <p style="text-align: center; font-size: small;">USER: 5harvim 7/13/2017 2:10:16 PM f:\project\5121884\ProjectDevelopment\Concept Plans\signing\PLANS15.dgn</p>	<p><b>Interchange Modification Report</b> <b>I-75 and SR 884 (Colonial Blvd.)</b> <b>DDI Alternative 4 Improved with CFI-SS</b> <b>Master Signing Plans</b></p> <p style="text-align: center; font-size: small;">FPID No.: 413065-1-52-01</p>	<p>SHEET NO.</p> <p style="font-size: large;">14</p>
		EXISTING LA ROW		PROPOSED ROADWAY				
		PROPOSED ROW		SIDEWALK/TRAIL				